



**Biddick**  
Academy

### **Catch-Up Premium Funding**

As a result of unprecedented disruption to learning resulting from the Covid-19 pandemic, schools have been awarded a 'catch-up' premium. As stated in the Ofsted Annual Report 2020, those from disadvantaged backgrounds and vulnerable pupils will have been significantly impacted in terms of academic progress and wellbeing. The catch-up premium will enable those hit hardest to catch-up rapidly.

The allocation of the catch-up premium has been calculated on a per pupil basis, with each mainstream school receiving £80 for every student. The allocated funding will be paid to schools in 3 parts: autumn 2020, spring 2021 and summer 2021.

This funding will be used to support students to catch up for lost teaching over the previous months, in line with the guidance on curriculum expectations for the next academic year.

Following the Coronavirus outbreak back in March and the resultant school closure, it is of vital importance that our students do not fall behind their studies and are given the support needed to 'Catch Up'.

**The allocated funding for Biddick Academy is £87,840.**

### Breakdown of Catch-Up Premium Spending

Improving Academic outcomes	
KS4 Intervention programme	Small group intervention in Maths, English, Science. Morning intervention in Ebacc/Open bucket subjects
KS3 Maths/Science intervention programme	Small group intervention for selected underperforming students.
Rewards for achievement and attendance	In-house half-termly and monthly rewards
Staff professional development	CPD on SEND Ranges, remote learning
Provision of resources for home learning	Stationary/art packs for vulnerable and DS students
Establish starting points for Year 7 students in light of lack of KS2 data	CAT4 tests and subsequent training in interpreting the data
Improving Literacy	
Small Group Intervention with Temporary English Intervention Teacher	40 periods per week of small group intervention across KS3 and KS4.
Accelerated Reader provision	Purchase of tablets to enable improved Accelerated Reader delivery
Supporting Wellbeing and Welfare	
Increased DSL capacity	DSL training for the wider pastoral team
<b>The allocated funding for Biddick Academy is £87,840.</b>	

*Note: The above table details spending specific to the Catch-Up premium only, further interventions are included in the PP Spending Strategy and Opportunity North East Strategy*

Evaluation of Impact:

The impact of Biddick Academy's catch-up strategy is evaluated through:

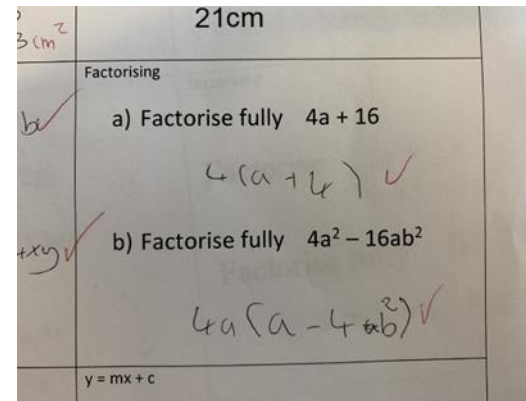
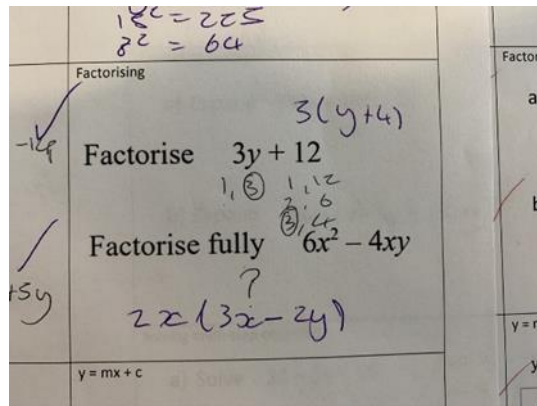
- Quality assurance and monitoring of intervention sessions by Faculty Leaders and the Senior Leadership Team
- Academic progress from starting points and against targets in internal and external assessments/examinations
- Student and parent feedback.
- Pastoral monitoring as part of the monitoring calendar.
- Senior Leadership monitoring as part of the Pupil Premium Strategy and whole school monitoring calendar.

## **Impact**

The Academy has continued to maintain a strong focus on the development of literacy, reading and numeracy given their central importance to a student's ability to access all areas of the school curriculum. Despite the turbulent nature of the academic year due to the pandemic, interventions continued to run remotely throughout the school closures and the funding was used in line with the above proposed spending. All interventions have also been closely aligned to the overall Academy's COVID 19 recovery plan and strategic priorities.

Outcomes show evidence of impact across all academic strategies. For example, in Year 7 reading intervention, the overall improvement in reading ages was an increase of 8 months, considering the disruption to school attendance this is a notable improvement for our most reluctant readers. Furthermore, of these students, a number improved their reading age by over a year, further reducing the gap with their peers. Moreover, students with an Education, Health and Care Plan improved their reading ages by one year during the four-month intervention period. The focus on further developing students' literacy remains a school priority.

Maths intervention was founded on consolidating knowledge of the key threshold concepts, to support students in knowing more and remembering more. Outcomes show that students demonstrated improvement in the key topics covered, including 'Binomial Expansion', 'Linear Factorisation' and 'Pythagoras' Theorem'. Some examples of students' progress are evidenced below:



At Key Stage Four, extensive intervention across a range of subjects, resulted in an improvement in Attainment 8 scores from 49 in 2019/2020 to 52.57 in the 2020/2021 Teacher Assessed Grades.

Additionally, as a result of the high quality, bespoke support given to students during the school closure period, for example rewards for participation and home learning, engagement in remote learning remained high throughout the lockdown periods.